



# MOTOTRBO R2

## PORTABLE TWO-WAY RADIOS



# MOTOTRBO R2

MOTOTRBO R2 PORTABLE  
TWO-WAY RADIOS

# BE RELIABLE



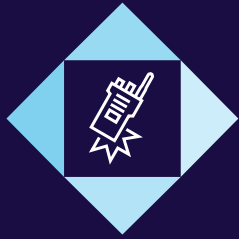


AN EVERYDAY WORKHORSE, THE MOTOTRBO R2 MARRIES DURABILITY AND ERGONOMICS TO ENSURE CONFIDENT, EASY HANDLING.

And with long range, configurable audio and seamless integration, the R2 is a reliable addition to an uninterrupted workday.

**USE WITH  
CONFIDENCE,  
BLOCK OUT THE  
NOISE AND  
INTEGRATE  
WITH EASE**





# SLEEK AND TOUGH

## ALL-WEATHER CONFIDENCE

Featuring an IP55 rating, and meeting MIL-STD-810 requirements across 11 environmental conditions, the MOTOTRBO R2 is designed to weather diverse work environments. Use with confidence in dusty factories, wet landscaping and more with ease, even while wearing gloves. Designed to survive the bumps and bruises of an active workday, the R2's durability means confident, quick communication whenever and wherever you need it.

## SLIM & LIGHTWEIGHT

No more dragging around clunky equipment — this radio is as light as it is tough, engineered to survive the harsh conditions of everyday business. Weighing less than 290g with a high-capacity battery, the R2 endured our rigorous Accelerated Life Testing program (ALT), which stimulates up to 5 years of field use. And when connected to an audio accessory, the robust design extends to the dust cover, which rotates to match the slim contour.

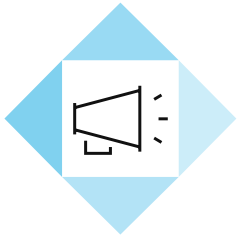
## FULL-SHIFT LIFE

The MOTOTRBO R2's slim, high-density battery won't wear down before shift change. And the R2 won't catch you off guard; press the PTT button to see the LED light, which blinks red to signal a low battery charge state.

**DURABLE,  
LIGHTWEIGHT  
AND LONG-  
LASTING, EVEN  
IN CHALLENGING  
ENVIRONMENTS**







# MAKE IT LOUD

## BLOCK OUT THE NOISE

Loud noise can make for unproductive, unsafe workspaces. MOTOTRBO R2's SINC+ feature is a noise suppressor that uses advanced algorithms to single out and eliminate disruptive background noise. Communicate with clarity to stay safe near a punch press, pneumatic drill, bulldozer and more.

**WITH SINC+ NOISE CANCELLATION, LONG RANGE AND SELECTABLE AUDIO PROFILES, YOUR MESSAGE REACHES ALL CORNERS OF THE WORKPLACE**



## GO THE DISTANCE

MOTOTRBO R2 has you covered with clarity and noise suppression, but what if your workforce is spread out over a large warehouse or field? Expect long range: high receiver sensitivity, high efficiency antennas and high interference immunity promise clear audio over a long distance, even in noisy environments.

## KEEP IT CLEAR

With MOTOTRBO R2's selectable audio profiles, you can amplify low, middle or high frequencies to satisfy your listening preference and environment needs. Together with the R2's loud speaker and low distortion, this feature makes sure that your message comes across loud and clear.



# WORK, UNINTERRUPTED

## SIMPLIFIED EXPERIENCE

### Designed with the user in mind

Pick from a menu of features that help manage a busy day. Easy to program and with a familiar design, R2 helps your team stay productive without interruption.

### With continued support to minimise downtime

- Device name, model number and preview image clearly labeled on the box
- Scan the QR code on the back of the device to find the Get Started page and support materials
- Standard warranty and optional service offerings\* with greater protection help you resolve issues with minimal downtime so you can keep your devices in the field longer.

2 programmable buttons

Priority scan, pre-programmed text messaging, rental timer and more

Scan QR code for additional support



## FOOLPROOF SWEET SPOT

The MOTOTRBO R2's contoured push-to-talk (PTT) button has a large sweet spot, making it quick to locate and activate. And if you need further convenience, attach the purpose-built Remote Speaker Microphone (RSM) to communicate without reaching for your belt.

## SEAMLESS INTEGRATION

Upgrading workforce technology can be costly, and managing a mixed-fleet of devices can be time consuming. MOTOTRBO R2, whose user interface will be familiar to a workforce using DP1400 devices, is compatible with select MOTOTRBO chargers and audio accessories, which makes for a low-cost, easy to manage migration.

\* Availability varies - contact your authorised Motorola Solutions reseller for more information.

# MOTOTRBO R2 ACCESSORIES

WITH THE  
MOTOTRBO R2 YOUR  
TEAM IS RELIABLE  
AND PRODUCTIVE,  
EQUIPPED TO CARRY  
OUT THEIR TASKS

## AUDIO CLEAR, COMFORTABLE AND CONVENIENT

Customize your audio experience with a purpose-built audio accessory designed to complement the R2's sleek form factor. The new Remote Speaker Microphone — secured by a robust accessory retainer — lets you communicate without reaching for your belt.



## ENERGY STRONG ENOUGH TO LAST ALL SHIFT

A dead battery halts production. Our lightweight batteries last, so your MOTOTRBO R2 stays on when you need it. A variety of flexible charging solutions enables you to charge batteries simultaneously, so your radios are always ready for tomorrow.



## CARRY SAFE AND SECURE

A hard leather carry case built for ease and security — safely store your MOTOTRBO R2 radio on your waist or hip while you stay hands-free and focused.



## ANTENNAS LONG-DISTANCE CLARITY

Short and flexible, these redesigned, high efficiency antennas work with high interference immunity to provide clear audio over a long distance.



To view MOTOTRBO R2's full suite of accessories, please visit:  
[motorolasolutions.com/R2/accessories](https://motorolasolutions.com/R2/accessories)





For more information, please visit:  
[motorolasolutions.com/R2](https://motorolasolutions.com/R2)

# MOTOTRBO R2

Motorola Solutions UK Ltd. Nova South, 160 Victoria Street, London, SW1E 5LB.

Availability is subject to individual country law and regulations. All specifications shown are typical unless otherwise stated and are subject to change without notice.

MOTOROLA, MOTO, MOTOROLA SOLUTIONS and the Stylized M Logo are trademarks or registered trademarks of Motorola Trademark Holdings, LLC and are used under license. All other trademarks are the property of their respective owners. ©2023 Motorola Solutions, Inc. All rights reserved. (04-23)